

# SCARP RIDGE LODGE

## GUESTROOMS



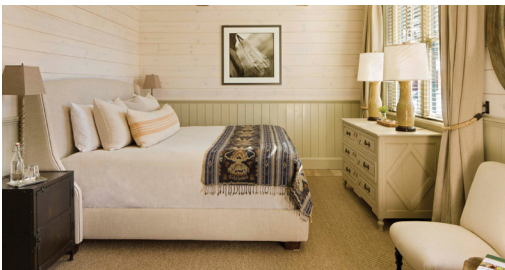
### RED LADY

- Four poster king bed
- En suite bathroom with steam shower and bateau bath tub
- Lofted mezzanine and office space
- Oxygen headset
- Television accessible from bed
- Minibar
- 538 square feet



### BUTTE

- Four poster king bed
- En suite bathroom with steam shower and bateau bath tub
- Adjoining outdoor terrace (shared with Whetstone)
- No television
- Minibar
- 454 square feet



### MARCELLINA

- King bed
- En suite bathroom with steam shower and bateau bath tub
- Pull-out sofa bed
- Sitting area with television
- Minibar
- 394 square feet



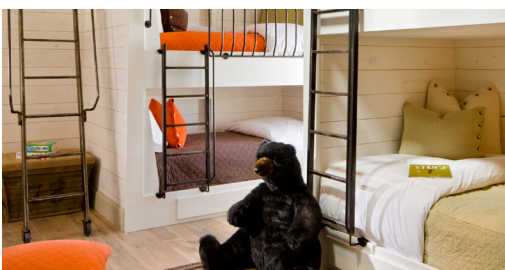
### WHETSTONE

- King bed
- En suite bathroom with steam shower and bateau bath tub
- Adjoining outdoor terrace (shared with Butte)
- Pull-out sofa bed
- Sitting area with television
- Minibar
- 458 square feet



### BECKWITH

- King bed
- En suite bathroom with steam shower and bateau bath tub
- No television
- No minibar
- 246 square feet



### BUNKROOM

- Two queen, two full and 3 twin beds
- En suite bathroom with shower and bath tub
- Lofted mezzanine and playroom with television and game consoles
- Adjoining nanny's room with single bed
- Minibar
- 340 square feet