



# ST. PATRICK'S TRIP MARCH 11-18, 2014



LET'S CELEBRATE ST. PATRICK'S DAY IN IRELAND AND GET UNIQUE EXPERIENCE!!!



Alpine Adventures, 3020 N. Federal Highway, Suite 10, Fort Lauderdale, FL 33306  
Phone: 1 954 564 6722 & Toll Free: 1 800 755 1330 & Fax: 1 954 564 6721  
Email: [info@alpineadventures.net](mailto:info@alpineadventures.net) & Website: [www.alpineadventures.net](http://www.alpineadventures.net)

## Price & Conditions

<b>Name of Group: St. Patrick's Festival Group</b>	<b>Dates:</b>
Number of days/ nights : 8 days / 7 nights	<b>11<sup>th</sup> – 18<sup>th</sup> March 2014</b>
Place of arrival: Dublin Airport	
Place of Departure: Dublin Airport	

### PRICES PER PERSON PER COACH BASED ON DRIVER & SEPARATE GUIDE THROUGHOUT

No of Persons	Min 20	Min 25	Min 30	Min 35	Min 40	Min 45
<b>11<sup>th</sup> – 18<sup>th</sup> March 2014</b>	\$1650	\$1600	\$1550	\$1500	\$1450	\$1400

*Single room supplement on request – \$500 per person*

**All prices apply with minimum 20 participants per option.**

### PRICES INCLUDE

- 7 nights at 3/4 star hotels, all rooms with private bath or shower
- Full Irish breakfast at hotel each day, Days 2-8 inclusive
- Dinner at hotel Day 1 – 5
- Dinner and Entertainment at Merry Ploughboys Pub or similar on Day 6
- **VISITS**

St. Patrick's Centre	Titanic Belfast Visitor Centre
Carrick – A – Rede Rope Bridge	Giants Causeway Visitor Centre
Ulster American Folk Park	Cliffs of Moher
Trinity College with the Book of Kells	Guinness Storehouse
- Modern motor-coach with driver x 7 full days as per itinerary (09h00-17h30)
- Modern motor-coach with driver x 1 evening return transfer on Day 6
- Modern motor-coach with driver x 1 airport transfer on Day 8
- English speaking guide x 7 full days as per itinerary (09h00-17h30)
- English speaking guide for airport assistance on Day 8
- Service charges and taxes at existing rates
- Portorage of one piece of luggage in and out of hotels

### PRICES DON'T INCLUDE

- Tips for driver and guide are not included in package price and should be considered by the client.
- One evening return transfers is included in our package price. If any additional evening return transfers are required, a supplement of \$450 per coach per transfer will apply.
- Air arrangement which can be booked on their own or we can arrange it for you upon request

### CONFIRMED HOTELS

Hotel	Location	No. of nights	Category
Days Hotel Belfast	Belfast	2 nights	3 star
White Horse Hotel	Derry	1 Night	3 star
Jury's Inn Galway	Galway	1 Night	4 star
Jury's Inn Christchurch	Dublin	3 nights	4 star

## HOTEL DESCRIPTIONS

### **Days Hotel Belfast**

**Rating: 3 Stars**

**Website: [www.dayshotelbelfast.co.uk](http://www.dayshotelbelfast.co.uk)**

Situated in the heart of Belfast City, the Days hotel Belfast opened its doors in 2003 and has become the largest hotel in Northern Ireland. Just a few minutes' walk from City Hall, the Grand Opera House, the Odyssey Arena and Waterfront Hall it is also close to Great Victoria Street Bus & Train Station.

Incorporating 250 modern, comfortable rooms, guests have dining options in both the restaurant and the bar. The hotel has one meeting room that can cater for up to 60 people.

Car parking is available at the hotel at a competitive rate.

The Days Hotel has the convenience of the city centre business, entertainment and shopping districts located on the doorstep of the hotel.

### **White Horse Hotel,**

**Rating: 3 Stars**

**Website: [www.whitehorsehotel.biz](http://www.whitehorsehotel.biz)**

The White Horse is a family-run hotel in a picturesque location overlooking Lough Foyle and the Donegal hills. A modern hotel, it has 57 bedrooms, a restaurant and bar with live music most weekends. The hotel boasts a new state of the art leisure complex comprising of a 22m swimming pool, sauna, steam room & gymnasium. Conference facilities at the hotel include 4 conference suites which can cater for groups of up to 550 delegates.

Conveniently located 7km from the historic City of Derry on the main road to the Giants Causeway, it is a very suitable base for exploring Derry city, the Inishowen peninsula and the North Antrim Coast.

### **Jury's Inn Galway,**

**Rating: 3 Stars**

**Website: [galwayhotels.jurysinns.com](http://galwayhotels.jurysinns.com)**

Nestled in the heart of Galway city beside the historic Spanish Arch, Jury's Inn hotel overlooks Galway Bay and the river Corrib. It is only a few minutes walk to the buzz of Galway's cultural, commercial and shopping districts.

A large modern hotel Jury's Inn has an informal atmosphere. With 130 spacious and comfortable bedrooms, a restaurant, café and bar it meets all the needs of the leisure or business guest.

The hotel does not have conference facilities.

Conveniently located to main access routes to the haunting landscape of Connemara and the Atlantic Coast makes it an ideal touring base.

### **Jury's Inn Christchurch**

**Rating: 3 Stars**

**Website: [www.dublinhotels.jurysinns.com/jurysinn\\_christchurch](http://www.dublinhotels.jurysinns.com/jurysinn_christchurch)**

Jury's Christchurch Inn is a modern building situated in Dublin's oldest quarter, opposite the historical Christchurch Cathedral. The hotel features 182 spacious and comfortable rooms and has a restaurant and bar facilities. Its perfect location means it is within easy strolling distance of Temple Bar area, St Patrick's Cathedral, Trinity College and Grafton Street. It has no meeting room facilities.

*Alpine Adventures, 3020 N. Federal Highway, Suite 10, Fort Lauderdale, FL 33306*

*Phone: 1 954 564 6722 & Toll Free: 1 800 755 1330 & Fax: 1 954 564 6721*

*Email: [info@alpineadventures.net](mailto:info@alpineadventures.net) & Website: [www.alpineadventures.net](http://www.alpineadventures.net)*

## PROGRAM

### Day 1: Tuesday 11 March 2014 – Dublin to Belfast

On arrival at Dublin airport meet with your guide and coach driver and depart for **Northern Ireland**. **Please note there will be one transfer to Belfast, guests arriving on earlier flights will have to wait in the arrivals hall for the remainder of the group to arrive.**

On route, **visit the St. Patrick's Center**



The centre is located below the hill where Down Cathedral stands. It features an interpretative exhibition which tells the fascinating story of Ireland's Patron Saint. The visit begins with an interesting well made audio visual about the life of St Patrick and has aerial video footage of some of the landmark sites in Ireland associated with the Saint. A series of interactive displays allow visitors to explore how Patrick's legacy developed in early Christian times and reveal the fabulous artwork and metalwork which was produced during this Golden Age. The exhibition also examines the major impact of Irish missionaries in Dark Age Europe - a legacy which remains to this day. Visitors can also visit the gardens developed behind the centre which lead to the grave of St Patrick beside Down Cathedral.

Check into your hotel

Overnight, dinner bed and full Irish breakfast at your hotel in Belfast or area.

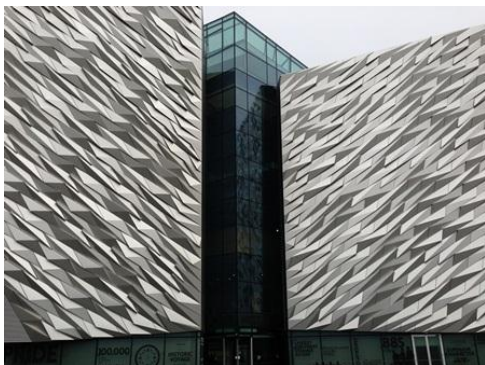
### Day 2: Wednesday 12 March 2014 – Belfast

**This morning enjoy a guided tour of Belfast.**

A guided city tour is an excellent way to discover Belfast City. The tour will take in the leaning Albert Memorial Clock tower (Ireland's answer to the Tower of Pisa) and the Opera House, which is one of Belfast's great landmarks. Your tour will pass by the City Hall, the Opera house, The Crown Bar (dates from 1885), Queens University and the Botanic Gardens. Some tours will take in a visit to the Harland and Wolfe Shipyard, where the Titanic was built and launched in 1912. A visit to the Shankill and Falls road will be of interest as it will give the visitor an indication of how life was in Belfast during the troubles.



Enjoy a visit to the new **Titanic Belfast Visitor Centre**



Titanic Belfast extends over nine galleries, with multiple dimensions to the exhibition, drawing together special effects, dark rides, full-scale reconstructions and innovative interactive features to explore the Titanic story in a fresh and insightful way; from her conception in Belfast in the early 1900s, through her construction and launch, to her infamous maiden voyage and catastrophic demise. The journey goes beyond the aftermath of the sinking, to the discovery of the wreck and continues into the present day with a live undersea exploration centre.

Spend the remainder of this day at your leisure.

Overnight, dinner bed and full Irish breakfast at your hotel in Belfast or area.

### **Day 3: Thursday 13 March 2014 – Belfast to Derry.**

#### **This morning depart for Carrick-A-Rede Rope Bridge**

Carrick-a-Rede, on the Antrim Coast, is a spectacular rope bridge, which spans a chasm, 30 metres deep and 20 metres wide. Originally a seasonal working bridge for fishermen, it connects a small island to the mainland. Its construction once consisted of a single rope handrail and widely spaced slats, which the fishermen would cross to bring ashore salmon caught off the island. The single handrail was subsequently replaced by today's two-handed railed bridge. Visitors bold enough to cross to the rocky island are rewarded with fantastic views. Underneath the bridge are large caves, which often served as a safe haven for fishing trawlers escaping from winter storms. Facilities include a restaurant, shop and toilets.

#### **Continue on to the Giants Causeway**



Encounter Northern Ireland's favourite giant Finn McCool at the new Giants Causeway Visitor centre on the North Antrim coast which opened in the summer of 2012. According to legend Finn McCool created the Giants Causeway by building stepping stones to Scotland to challenge the Scottish giant Benandonner! The new Visitor centre explores the major themes of mythology, geology, landscape, ecology, culture and social history based on the UNESCO World Heritage site that consists of 40,000 basalt polygonal columns formed 60 million years ago after a volcanic eruption. There are various interactive exhibits and short video presentations within five designated interpretive exhibition areas and the self guided visit will culminate with

a spectacular two minutes audio-visual projection of a volcanic eruption flowing over the walls and onto the floor. Other services and facilities include a large craft and souvenir shop, Tourist Information and restaurant.

Continue to your hotel in Derry

Overnight, dinner bed and full Irish breakfast at your hotel in Derry or area.

### **Day 4: Friday 14 March 2014 – Derry to Galway.**

#### **Depart Derry for Galway via the Ulster American Folk Park.**

The Ulster American Folk Park is located on the outskirts of Omagh town. The Folk Park grew up around the restored boyhood home of Judge Thomas Mellon (founder of the Pittsburgh banking dynasty). It has a permanent exhibition, called "Emigrants", which explains why two million people left Ulster for America during the 18th and 19th centuries, the exhibition also tells the vivid story of the grim lives of 15,000 Irish vagrants and convicts who were transported to North America during the mid-18th century. The Ship and Dockside Gallery features a full-size reconstruction of an early 19th century sailing ship ~ similar to those which carried the convicts across the Atlantic. The park has more than 30 historic buildings ~ some of which are original, some are replicas. There are settler homesteads, including that of John Joseph Hughes (the first Catholic Archbishop of New York), churches, a schoolhouse and a forge. Costumed guides and craftspeople are on hand to chat and explain the art of spinning, weaving, and candle making.



Continue on to Galway and check into Hotel.

Overnight, dinner bed and full Irish breakfast at your hotel in Galway or area.

### **Day 5: Saturday 15 March 2014 – Cliffs of Moher**

Depart Hotel in Galway at 09:00 for the Cliffs of Moher

Today travel to the Cliffs of Moher via **the Burren Region**

The Burren, part of which forms the 100 square km Burren National Park, is a unique place. It is a Karst limestone region of approximately 300 sq. km, which lies in the north west corner of Co Clare. It is composed of limestone pavements, which have been eroded to a distinctive pattern. This pavement is criss-crossed by cracks known as grykes in which grow a myriad of wild flora and under which are huge caves and rivers which suddenly flood when it rains. The Burren contains dozens of megalithic tombs and Celtic crosses as well as a ruined Cistercian Abbey dating back to the 12th century. You will discover small villages abandoned during the famine period and green roads on which you can walk for miles without ever seeing a car. The flora on the Burren is a mixture Arctic and Mediterranean and rare flowers such as gentian, orchids and bloody cranesbill are the rule rather than the exception. The Burren is truly an exceptional part of Ireland.

Continue on to the **Cliffs of Moher**



Situated on the Atlantic Ocean and bordering the Burren Area, the Cliffs of Moher are one of Ireland's most spectacular sights. Standing 230 metres above the ground at their highest point and 8km long, the Cliffs boast one of the most amazing views in Ireland. On a clear day, the Aran Islands are visible in Galway Bay as well as the valleys and hills of Connemara. The cliffs reach their highest point just north of O' Brien's Tower built by Cornelius O' Brien, a descendant of Brian Boru, to entertain his lady friends. A visit of the tower is also possible. Atlantic Edge is the exciting new interpretive centre at the Cliffs of Moher and is built into the natural landscape.

The centre is a huge domed cave that contains images, exhibits, displays & experiences exploring different elements of the mighty Cliffs of Moher: Ocean, Rock, Nature and Man.

Lunch at your leisure; depart for Dublin at 14:30.

Overnight, dinner bed and full Irish breakfast at your hotel in Dublin or area.

#### **Day 6: Sunday 16 March 2014 – Dublin.**

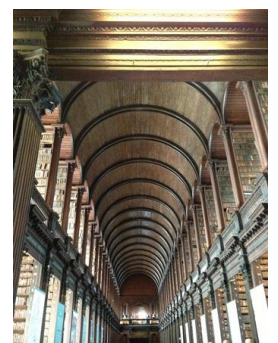
This morning depart for Dublin and on arrival enjoy a **panoramic tour of Dublin**

A **panoramic tour** is the ideal introduction to “Dublin’s Fair City”. The tour will introduce you to the principal sites, which you may then revisit at your leisure. You will visit the elegant Georgian squares, famous for its architecture and of course its famous –doors. Pass by Trinity College, with the 8th century Book of Kells and the long room with its 200,000 books. Continue to St Patrick’s Cathedral. Built in 1192, it is one of Ireland’s largest Cathedrals made famous by its former dean Jonathan Swift, author of “Gulliver’s Travels.” You will also see Christchurch, built by the Anglo-Norman’s in 1172 to replace an earlier Church built by the Vikings in 1038, on your way to the Phoenix Park with its many monuments including the Papal cross. Return to the city centre via the Quays, passing by the Guinness brewery, and Collins Barrack, now part of the national museum, before arriving back into O’Connell Street and the city center.



#### **Visit to Trinity College with Book of Kells.**

Thomas Burgh built the Old Library building in the 18<sup>th</sup> century. Today it houses one of Ireland’s most illustrious books, the 9th century “Book of Kells”. Before viewing the famous book visitors pass through an excellent exhibition based on the book of Kells and other important books written in monasteries around Ireland from the 9<sup>th</sup> century. After viewing the book of Kells visitors are invited to visit the long room built in 1745. Once the principal library of the University, it now contains over 200,000 books and manuscripts of the Trinity’s oldest volumes. Brian Boru’s harp said to be the “ oldest harp in Ireland” and a copy of the 1916 proclamation, one of the most important documents relating to Irish history are also on display in the long room.



*Alpine Adventures, 3020 N. Federal Highway, Suite 10, Fort Lauderdale, FL 33306  
Phone: 1 954 564 6722 & Toll Free: 1 800 755 1330 & Fax: 1 954 564 6721  
Email: [info@alpineadventures.net](mailto:info@alpineadventures.net) & Website: [www.alpineadventures.net](http://www.alpineadventures.net)*

## Visit to Guinness Storehouse.



The Guinness Brewery in Dublin is Europe's largest stout producing brewery and home to the Guinness Storehouse. Opened in 1904 The Storehouse was an operational plant for fermenting and storing GUINNESS. Today it houses a very fine exhibition dedicated to the Guinness story. Visitors will discover what goes into the making a pint of GUINNESS - the ingredients, the brewing process, the time, the craft and the passion. The exhibition shows how the brew has been marketed and how it is today sold in over 150 countries. The visit ends with a visit to the 7<sup>th</sup> floor Gravity bar to sample first-hand the elixir of life ~ a pint of Guinness. The Storehouse has a retail store, gallery and exhibition area, a restaurant and two bar areas.

## Tonight you will enjoy dinner and entertainment at The Merry Ploughboys Pub

This is a state-of-the-art music venue open seven nights a week, all year round. Their lively show features contemporary Irish dancing and well-known guest artists. Fine food is a very important element. At Merry Ploughboy's Pub, youthful vibrancy has successfully combined with traditional craftsmanship to provide an excellent evening entertainment

Overnight, bed and full Irish breakfast at your hotel in Dublin or area.



## Day 7: Monday 17 March 2014 – St. Patrick's Day!

**Please note coach is included for the full day today (09:00 – 17:30)**

As the one national holiday that is celebrated in more countries around the world than any other, St. Patrick's Day is the day when everyone wants to be Irish.



The city center streets are closed to traffic; is this just "Wishful Thinking"? There are 700,000 people lining the streets dressed "Head to Toe" in green, the sun is beaming in the sky. In the distance you can hear the hum of music and the sound of 3,000 pairs of feet.....it's St. Patrick's Day and it's time for the world famous **St. Patrick's Festival Parade**

For two hours you will enjoy an awesome display of creative talent as the national St. Patrick's Festival Parade snakes its way through the city center. International and Irish marching bands join performers, dancers and street theatre companies to present a wonderfully entertaining parade. The parade is a piece of moving theatre, complete with its own Creative Director. Colorful costumes flamboyant performances and outstanding musical talent will be on show.

Enjoy the rest of the afternoon at leisure to savor the atmosphere of St. Patrick's Day.

(Please see website [www.stpatricksdays.ie](http://www.stpatricksdays.ie) for information on 2013 festival to get an idea of day events)

## Optional – 15h30 – 18h00 – Bringing the Streets to life (2013) Subject to change

Dublin will be bursting at the seams with open-air performances as St. Patrick's Festival fever swings into town. There is a full programme of band and street performance for families and visitors alike to experience around the city throughout the Festival.

**Optional – 18h30 – Trad Stage at House Square, Temple Bar (2013) Subject to change**

Keep the St. Patrick's Day celebrations going with a rousing free traditional Irish music gig in the heart of Dublin city. Experience the warmth, mastery and exuberance of Irish traditional music at its very best. An enriching musical experience is guaranteed.

Tonight enjoy dinner under your own arrangements

Overnight, bed and full Irish breakfast at your hotel in Dublin or area

**Day 8: Tuesday 18 March 2014**

This morning transfer to Dublin Airport for your return flight home.

**END OF THE TRIP!**

**NOTES**

**Deposit and Payment Policy:**

Initial Deposit: \$ 750 per person due upon reservation request.

Final Payment: Remaining balance due 65 days before departure. For reservations received within 65 days of the departure date the final balance is due upon confirmation.

Prices apply with minimum 20 participants per option. If there are less than 20 people signed up for this trip, the total price will be adjusted accordingly and there is a possibility of trip cancellation. If there are more than 20 people, the total price will be adjusted accordingly based on pricing grid provided above.

Final payment subject to adjustment of final numbers and currency rate

Currency rate of today 1 EURO = 1.30 USD

Our schedule for deposits and payments reflects our prepayment requirements.

It is important that your payments be received in our office by the dates due. If not, we may have difficulty in retaining your travel space and prices, and may be required to cancel your arrangements. We regret that we are unable to deliver your tickets, vouchers, or travel documents until full payment has been received.

**Form of Payment**

Deposit and payments may be made by personal checks or credit card. When you request payment by credit card, you are authorizing us to charge the deposit, final payment, and any other fees to the designated charge card and you are agreeing not to initiate a charge-back. Please understand if a check is returned, or if your credit card is declined, we must charge you a handling fee of \$35 per item. Your travel agent may assist you by forwarding your deposits and payments to us. However, the travel agent is not acting as our agent for the collection of money, and we are not able to credit your account until we receive your payment in our office.

**Travel Cancellation and Refunds**

We are always sorry if someone has to cancel travel plans; we know what a disappointment and disruption this can be! To avoid misunderstandings, please send us cancellations in writing and enclose all travel documents including air tickets and vouchers. The date of receipt in our office determines the effective date of cancellation.

Purchase of the Vacation Protection Plan is recommended to minimize financial loss due to cancellation fees which cannot be waived in any circumstances.

Cancellation Fees and Refunds: Cancellations received more than sixty (60) calendar days prior to

travel will be assessed ninety dollars (\$90.00) per person plus any fees assessed by the lodging and/or other vendors. Alpine Adventures will offer this \$90 cancellation fee as a credit towards another trip booked within 12 months of cancellation.

Generally, lodging providers do not provide refunds for late arrivals or early departures. If notice of cancellation is received 60 or fewer days prior to arrival, regardless of the reason for the cancellation, part or all of amounts paid may be forfeited. Consult your travel agent or Alpine Adventures for specific details regarding cancellation fees and refund request procedures at time of booking.

To avoid unexpected surprises, we strongly recommend trip insurance.

No refunds will be given for unused portions of your package.

To avoid incurring cancellation costs, the purchase of insurance is strongly recommended.



*Alpine Adventures, 3020 N. Federal Highway, Suite 10, Fort Lauderdale, FL 33306  
Phone: 1 954 564 6722 & Toll Free: 1 800 755 1330 & Fax: 1 954 564 6721  
Email: [info@alpineadventures.net](mailto:info@alpineadventures.net) & Website: [www.alpineadventures.net](http://www.alpineadventures.net)*